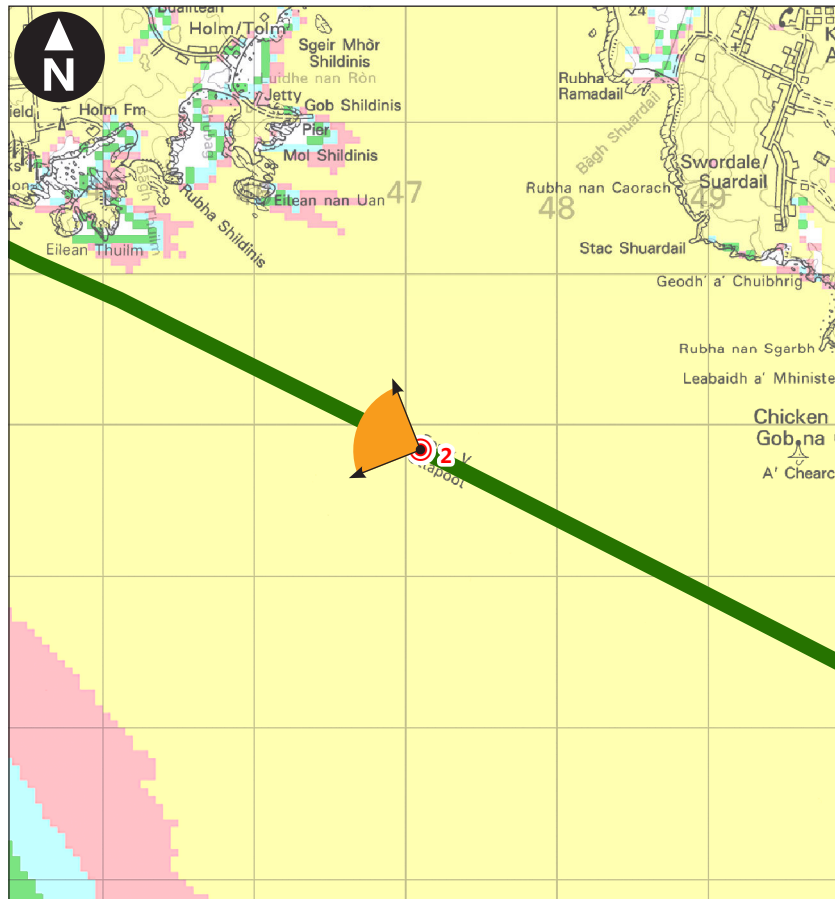
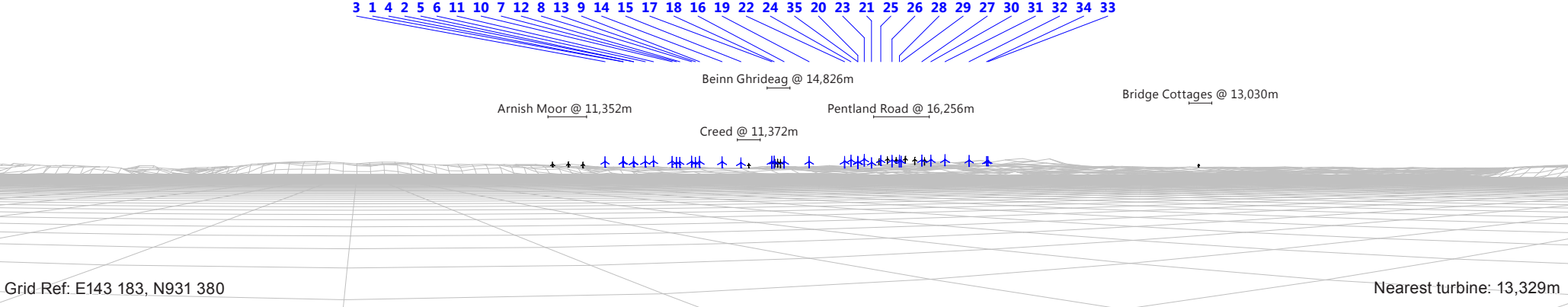
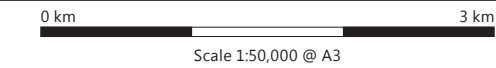
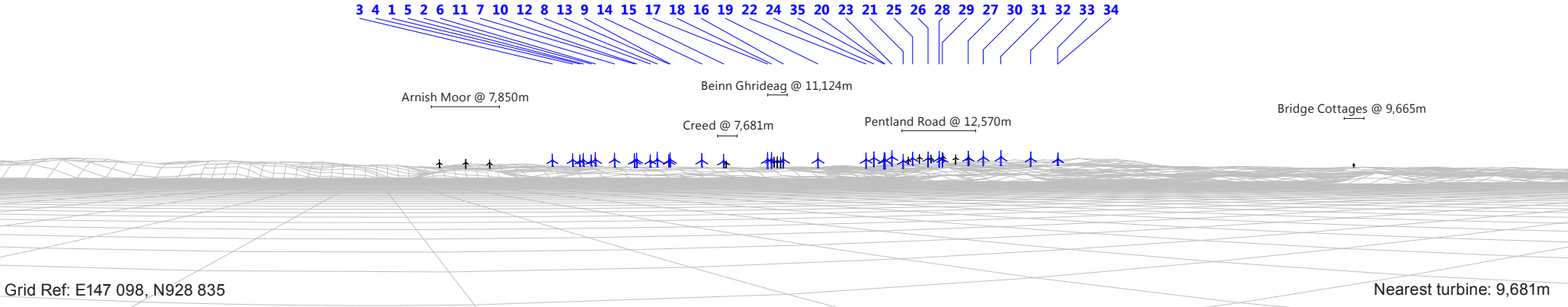


Viewpoint 1 - LVIA VP16 (Stornoway - Ullapool Ferry Route B)



Viewpoint 2



- Notes:
- i) Key for ZTV and cumulative wind farms as illustrated on Figure 6.23a.
 - ii) The OS Terrain 50 data on the wirelines and ZTV does not take into account the screening effects of any localised landform, vegetation and built-form.
 - iii) Wirelines illustrate a 90° field of view (unless otherwise stated) and are provided for illustrative purposes only.



Figure 6.23b
Sequential Route Assessment:
Stornoway – Ullapool Ferry Route

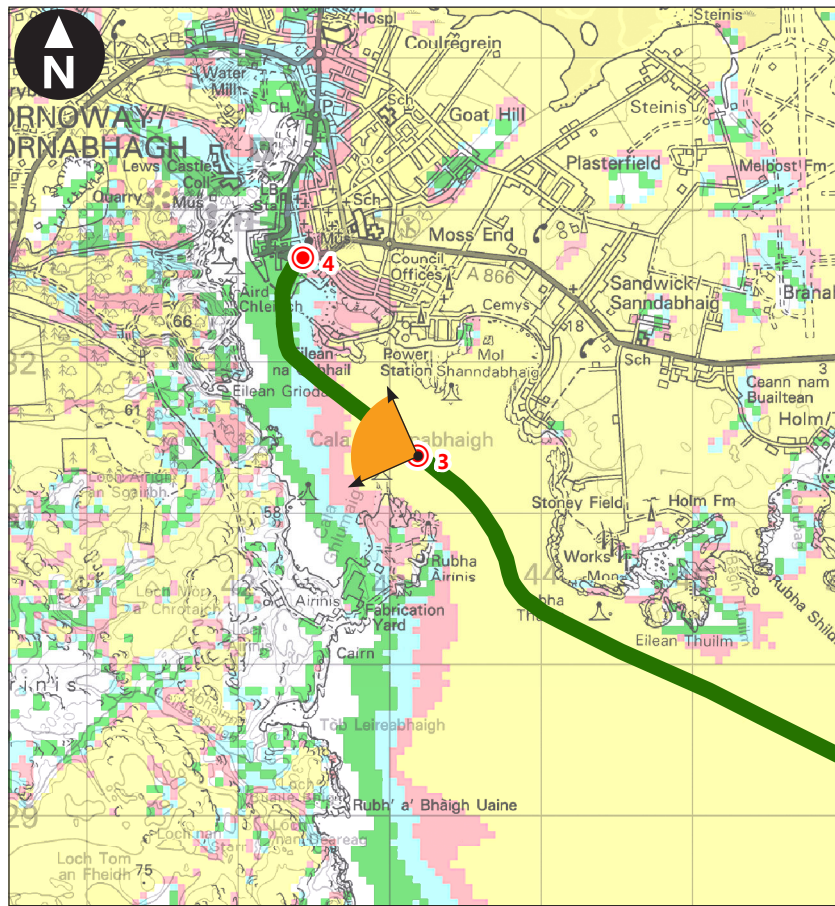
Stornoway Wind Farm
EIA Report

March 2019

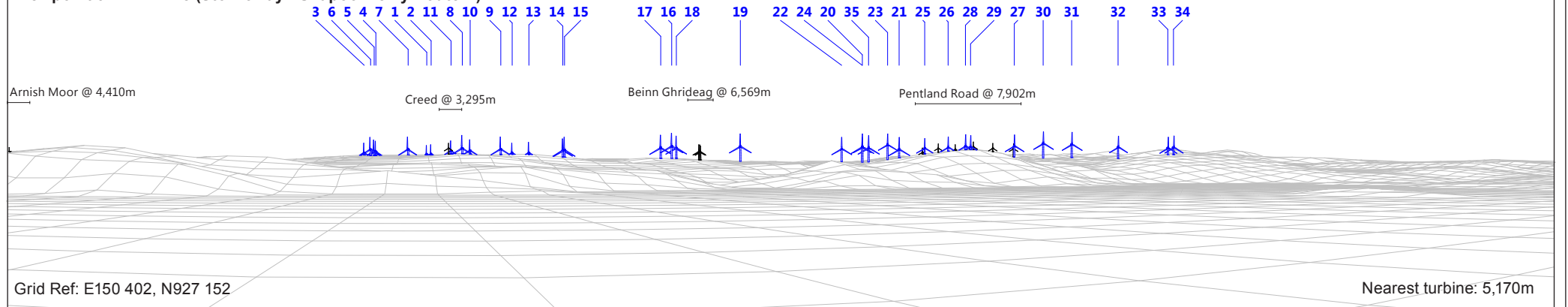


wood.

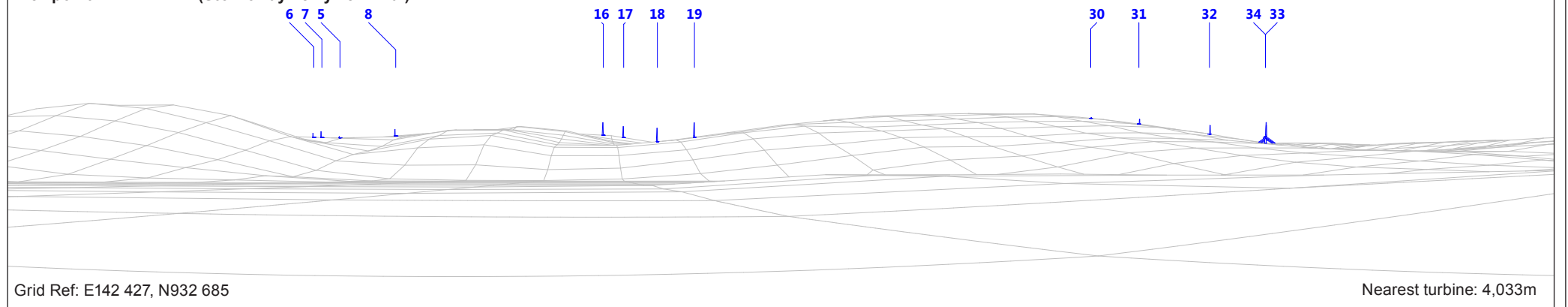
Wind Farm Key: Stornoway Wind Farm Existing Consented



Viewpoint 3 - LVIA VP8 (Stornoway - Ullapool Ferry Route A)



Viewpoint 4 - LVIA VPB (Stornoway Ferry Terminal)



0 km 3 km
Scale 1:50,000 @ A3

Wind Farm Key:  Stornoway Wind Farm  Existing  Consented

- Notes:
- Key for ZTV and cumulative wind farms as illustrated on Figure 6.23a.
 - The OS Terrain 50 data on the wirelines and ZTV does not take into account the screening effects of any localised landform, vegetation and built-form.
 - Wirelines illustrate a 90° field of view (unless otherwise stated) and are provided for illustrative purposes only.



Figure 6.23c
Sequential Route Assessment:
Stornoway – Ullapool Ferry Route

Stornoway Wind Farm
EIA Report

March 2019



wood.