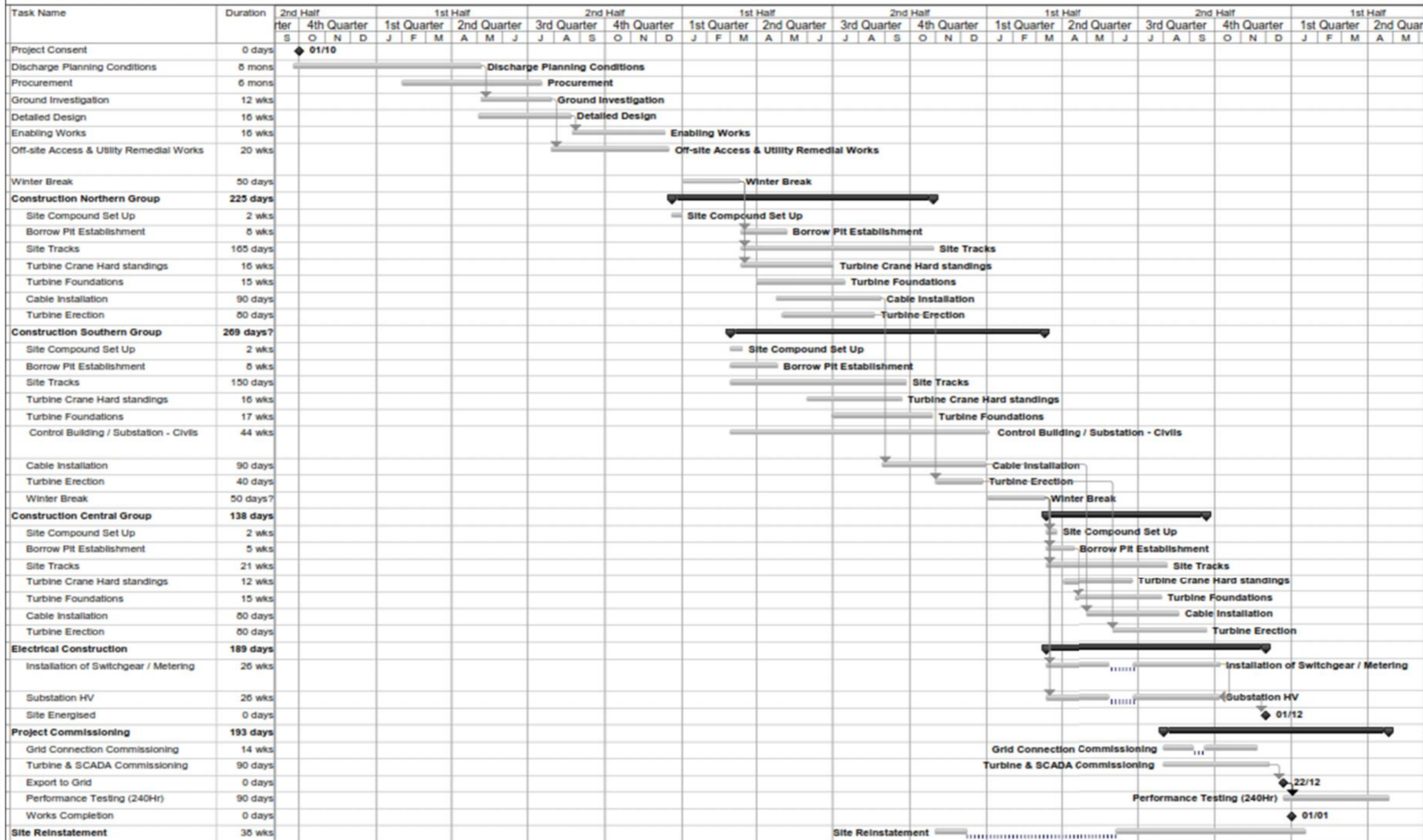




LWP Wind Development Construction Programme



Key

No Window



© Crown copyright. All rights reserved. Licence number 0100031673.

Client

Stornoway Wind Farm
EIA Report

Figure 4.14
Indicative Construction Programme

\\edi3-fs1-global.amec.com\shared\data\Projects\40001 SUB Stornoway Wind Farm\040\Mapinfo\40001_Gos346 Figure 4.14 Indicative Programme.wor Tim Doggett