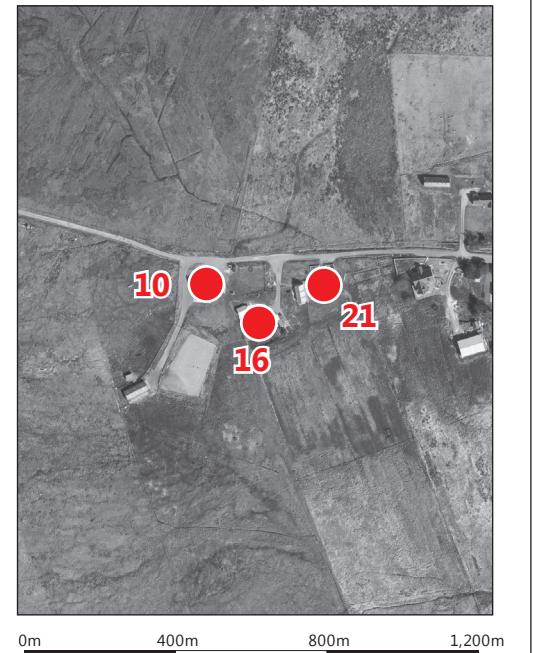


No.16B - Croft House, No.16A Upper Newvalley, No.16 Upper Newvalley - Aerial Photograph



No.16B - Croft House, No.16A Upper Newvalley, No.16 Upper Newvalley - Aerial Photograph with ZTV



Scale 1:5,000 @ A3

© Crown copyright. All rights reserved. Licence number 0100031673.

- 1 - 8 turbines may be theoretically visible
 - 9 - 17 turbines may be theoretically visible
 - 18 - 26 turbines may be theoretically visible
 - 27 - 35 turbines may be theoretically visible
- Maximum Field of View (FoV) if all turbines were visible

Note:
This drawing is based on a computer generated Zone of Theoretical Visibility (ZTV). The areas shown indicate the maximum theoretical visibility of the proposed turbines using Aerial Photography Derived 2m DSM height data only. The ZTV calculation only takes into account any surface features such as trees and buildings within the Aerial Photography Derived 2m DSM boundaries. The ZTV also includes an adjustment that allows for the Curvature and Light Refraction of the Earth.

Client

Lewis Wind Power
Cumhachd Gaoithe

Stornoway Wind Farm
EIA Report

Figure 6C.8a
Group D - Residential Properties:
10 (No.16B - Croft House),
16 (No.16A Upper Newvalley),
21 (No.16 Upper Newvalley)

March 2019

 **wood.**

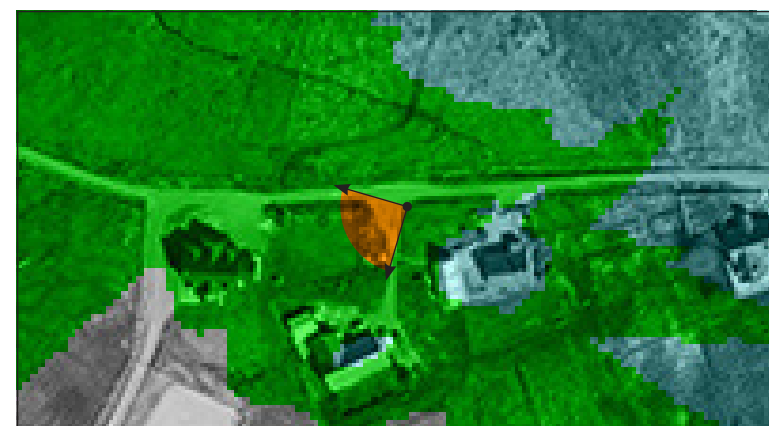


90° Indicative Photowire from Viewpoint Location

Note:
The terrain data used to produce the wireline does not take into account the screening effects of any localised landform, vegetation and built-form.



No.16B - Croft House



Map of Viewpoint Location



No.16 (Upper Newvalley)



No.16A (Upper Newvalley)

Client

Lewis Wind Power
Cumhachd Gaoithe

Stornoway Wind Farm
EIA Report

Figure 6C.8b
Group D - Residential Properties:
10 (No.16B - Croft House),
16 (No.16A Upper Newvalley),
21 (No.16 Upper Newvalley)

March 2019



wood.