



No.1 - Last House, No.1A - River View House, No.2A Newmarket, No.2 - Gleann an t'Sagairt - Aerial Photograph



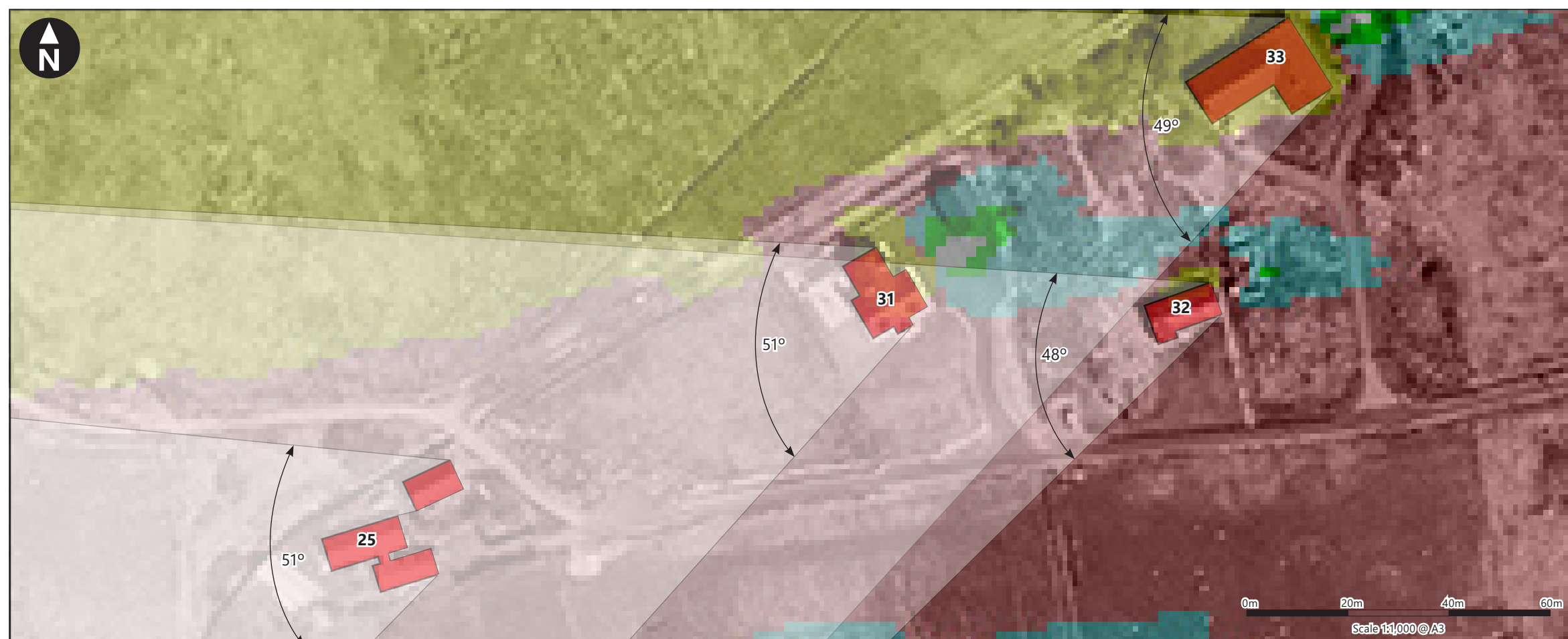
0m 400m 800m 1,200m
Scale 1:5,000 @ A3

© Crown copyright. All rights reserved. Licence number 0100031673.

- 1 - 8 turbines may be theoretically visible
- 9 - 17 turbines may be theoretically visible
- 18 - 26 turbines may be theoretically visible
- 27 - 35 turbines may be theoretically visible


Maximum Field of View (FoV) if all turbines were visible

Note:
This drawing is based on a computer generated Zone of Theoretical Visibility (ZTV). The areas shown indicate the maximum theoretical visibility of the proposed turbines using Aerial Photography Derived 2m DSM height data only. The ZTV calculation only takes into account any surface features such as trees and buildings within the Aerial Photography Derived 2m DSM boundaries. The ZTV also includes an adjustment that allows for the Curvature and Light Refraction of the Earth.



No.1 - Last House, No.1A - River View House, No.2A Newmarket, No.2 - Gleann an t'Sagairt - Aerial Photograph with ZTV

Client




Lewis Wind Power
Cumhachd Gaoithe

Stornoway Wind Farm
EIA Report

Figure 6C.13a
Group I - Residential Properties:
25 (No.1 - Last House), 31 (No.1A - River View House), 32 (No.2A Newmarket), 33 (No.2 - Gleann an t'Sagairt)
March 2019

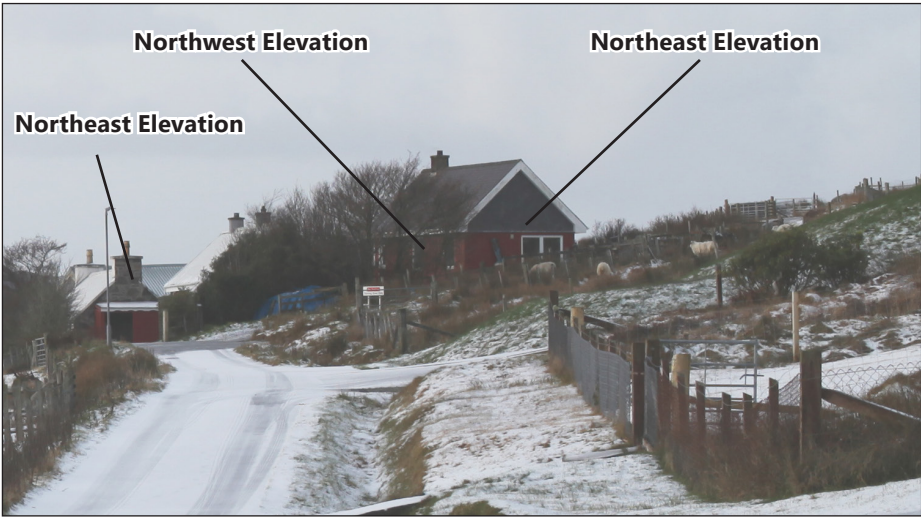
●
●
●
●





90° Indicative Photowire from Viewpoint Location

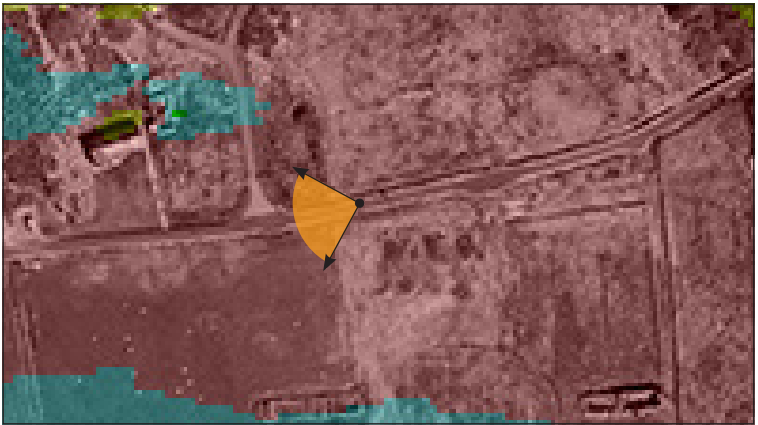
Note:
The terrain data used to produce the wireline does not take into account the screening effects of any localised landform, vegetation and built-form.



No.1 - Last House



River View House & No.2A (Newmarket)



Map of Viewpoint Location



No.2 - Gleann an t'Sagairt

Client



Stornoway Wind Farm
EIA Report

Figure 6C.13b
Group I - Residential Properties:
25 (No.1 - Last House), 31 (No.1A -
River View House), 32 (No.2A Newmarket),
33 (No.2 - Gleann an t'Sagairt)

March 2019



wood.